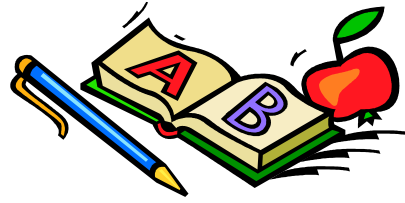


# Welcome



## To

**New Pitsligo Nursery**

**School Street**

**New Pitsligo**

**AB43 6NE**

**Telephone: 01771 653232**

e-mail: [newpitsligo.sch@aberdeenshire.gov.uk](mailto:newpitsligo.sch@aberdeenshire.gov.uk)

### Staff

Head Teacher:

Mrs Helen James

Nursery Teacher:  
(in a support role)

Mrs Isobel Watson

Nursery Nurses:

Ms Debra Youngs

Miss Gemma Wood

Mrs Kaireen McKenzie

## Aims of the Nursery

At New Pitsligo Nursery we aim to:

- To present a curriculum which is child centred, activity based and appropriate to each child's individual development.
- To provide a caring, safe, friendly supportive, attractive, stimulating and relaxed environment where children can feel happy and secure.
- Have a partnership approach with families, carers, the community and other agencies concerned with children's welfare.
- To establish an open relationship with parents, based on trust and mutual respect, where they feel confident in discussing their child's development.
- To encourage positive behaviour and attitudes in the children.
- Make your child's transition from nursery into Primary 1 as smooth as possible.

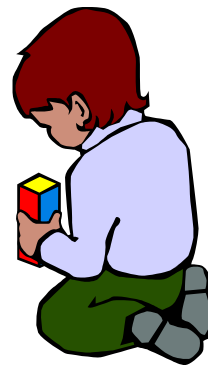
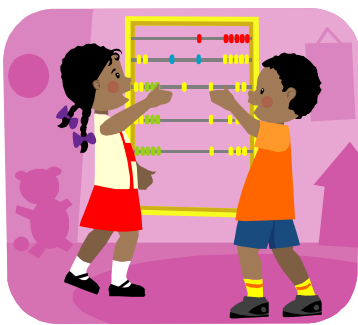
We are part of the School here at New Pitsligo and have access to the PE hall and music room and attend appropriate assemblies and other school events. This means that many routines will be similar to Primary 1 and will help ease your child through the transition. Liaison between Nursery and Primary Staff and the sharing of records and "work" samples will also help this process.

## Curriculum

The nursery curriculum is focused around the experiences and outcomes from "A Curriculum for Excellence". This curriculum is designed for 3-18 year olds and provides continuity for learning throughout the child's life at school.

The nursery curriculum is built on the firm belief that young children learn best from first hand experience through "doing" rather than simply being told. Therefore the children spend most of their nursery day choosing from a wide range of activities or "playing" as they will call it.

Carefully planned activities offered in the nursery will help to promote every aspect of your child's individual development through play. Some activities will be shared with friends, some the child will complete on his/her own and others will involve a group or whole class working together.



## Snack

The children are offered a snack at nursery for which there is a charge of **£2.50** per week. Snack money should be paid on the first day of each week or can be paid in full at the beginning of each new term.

The nursery is part of a Health Promoting School and therefore snack generally consists of fruit, vegetables, toast, shortbread or other items purchased via the school tuck shop. We offer milk or water to drink.



The child will be involved in baking their own cake on their birthdays.



Children are encouraged but never forced to try a wide variety of foods and are congratulated for trying. Good eating habits and manners are also encouraged and praised.

If your child has any food allergies please inform the nursery staff.

As part of the Child Smile scheme, the children brush their teeth every day.



## What Do I bring to Nursery?

Normally we ask that children do not bring toys or jewellery to nursery as they can get broken or lost. However, initially, if a child needs a "comforter" to ease the break between home and school, please let him/her bring it in.

Your child will have a coat peg and we ask you to leave a bag with a change of clothes on it - in case of accidents.

At nursery your child will take part in messy activities such as paint, glue, sand and water play. The nursery provides aprons for messy activities but we cannot guarantee that clothes stay clean, so please dress your child in play clothes as some paint stains are hard to remove. Please note that nursery jumpers and polo shirts are available to order from the school office.

We ask that every child be provided with a pair of gym shoes or slippers to wear in the nursery. Each child has their own shoe box under their peg.



We like to play outdoors whenever possible so you should always ensure that your child brings a jacket to nursery.

We visit the gym once a week either with nursery staff or with the PE specialist. On gym days the children should wear a t-shirt as well as their gym shoes. The children only need to bring shorts in the last term.

**Please put your child's name on all items of clothing!**

## Attendance and Health Issues

If your child is unable to attend Nursery you must inform us, either by telephoning the school office on **01771 653232**, or by informing the Nursery Staff in advance.

We are obliged to investigate any unexplained absences and any prolonged absence where we have been unable to contact you must be reported to the police as part of our Child Protection Policy.

In the event of your child becoming ill at nursery you will be contacted and asked to collect your child. You will be asked to provide us with an emergency contact telephone number when your child starts nursery.

Please remember to keep us up to date with changes of mobile telephone numbers, emergency contacts etc.

If your child should require any medication to be administered during the nursery session (*e.g. asthma inhalers*) you will be required to complete a consent form.

Staff should only administer medicine when absolutely necessary, so if your child is feeling ill, they should be kept at home. In accordance with NHS guidelines, children suffering from sickness and/or diarrhoea should be absent from Nursery until symptoms have ceased for 48 hours.



## Behaviour Policy

As a whole school our approach to managing challenging behaviour is restorative. This is because we know that fairness is very important to children feeling safe and cared for.

Being restorative means that everyone understands the impact of their behaviour.

When looking for a solution we use five basic questions:

### Restorative Practice

The five  
basic  
questions

1. What happened?
2. What part did you play?
3. How were you affected?
4. What do you need to make it right?
5. How can we repair the harm?

Sometimes in Nursery a simple timeout session is all that is required. If behaviour is, however, causing concern this will be reported to the parent so that we can work together to find a solution.

## Child Protection

All children have a right not to be abused and to be protected from abuse and neglect; therefore child protection is the responsibility of everyone. "*It's everyone's job to make sure I'm alright*" (Scottish Executive Nov. 2002) underlines the need for us all to take responsibility in order to protect children.

In our school we are committed to creating an environment in which children are safe from abuse and in which any suspicion of abuse is responded to promptly and appropriately. The well being of children in our care takes precedence over any other consideration.

Where there is the possibility that a child could be at risk of abuse or neglect, the school is required to refer the child to Social Work, the Police or the Children's Reporter and, under these circumstances, the parent would not normally be consulted first.

Should you wish to talk further about Child Protection and safety of children, please feel free to contact the Head Teacher.

